

BACK BAR

REFRIGERATOR
MODEL : TBB-2SG



FEATURES / BENEFITS

■ EFFICIENT REFRIGERATION SYSTEM

Turbo Air's refrigerators are designed with oversized and balanced refrigeration systems. These include efficient evaporators and condensers for faster cooling and greater efficiency.

■ FORCED AIR COOLING SYSTEM

Fast cooling and balanced temperature throughout the cabinet.

■ STAINLESS STEEL COUNTERTOP AND INTERIOR

The exterior of cabinet is constructed with heavy gauge reinforced stainless steel countertop and wear-resistant black vinyl coated galvanized steel. Interior is stainless steel floor and door liners with white painted galvanized steel inside walls. Turbo Air Back Bar model guarantees utmost in cleanliness and long product life. It also can add a touch of style to the most refined setting.

■ LED INTERIOR LIGHTING FOR ALL MODELS

Bright LED interior lighting is specifically designed for perfect visibility throughout the interior.

■ HIGH-DENSITY POLYURETHANE INSULATION

The entire cabinet structure is foamed-in-place using high density, CFC free polyurethane insulation.

■ ADJUSTABLE, HEAVY DUTY, PE (POLYETHYLENE) COATED WIRE SHELVES

■ ERGONOMICALLY DESIGNED DOORS

Customers' fatigue fades away with easy grip handles and doors that open effortlessly. These features along with self-closing doors make this the ultimate choice in customer convenience.

■ SIDE MOUNT COMPRESSOR UNIT

By positioning the compressor on the side of the unit, refrigerators can now be serviced without being moved.

Model	Swing Door	Capacity (litres)	#of Shelves	HP	AMPS	Crated Weight (kg)	W x D x H (mm)
TBB-2SG	2	538	6	1/3	1.7	140	1492 x 692 x 1065

BACK BAR

REFRIGERATOR
MODEL : TBB-2SG

Model : TBB-2SG

SPEC SHEET	TBB-2SG
Classification	Refrigerator
Cabinet dimension (WxDxH mm)	1492x692x1065
Capacity (Liters)	538
Inner Temperature	0°C ~ 8°C
Ambient Temperature	40°C
Doors	2
# of shelves	6
Refrigerant	R-134a
Compressor (HP)	1/3
Cooling Type	Fan cooling type
Insulation Type	Polyurethane/ Cyclopentane+CFC Free
Temperature Control Type	Thermostat
Amps (A)	1.7
Voltage (V/Hz/Ph)	240V 50Hz 1Ph
Power (W)	340
Weight (Kg)	140

Design and specifications subject to change without notice.
Actual shipping weight may differ due to extra packing materials for product protection.

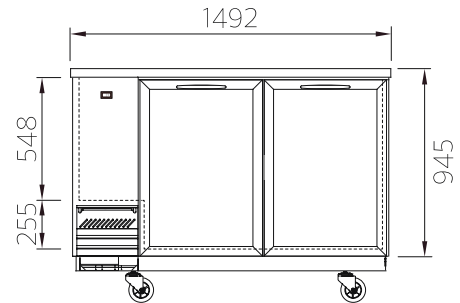
- DOOR LOCKS STANDARD
- SELF-CONTAINED SYSTEM
- 4" SWIVEL CASTERS STANDARD

WARRANTY 2 YEARS
PARTS & LABOUR

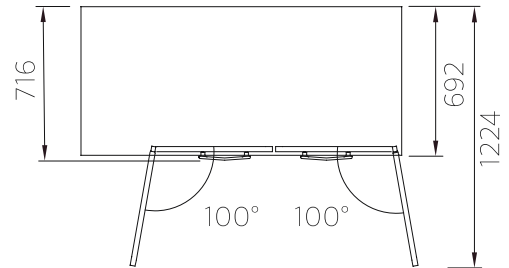


PLAN VIEW

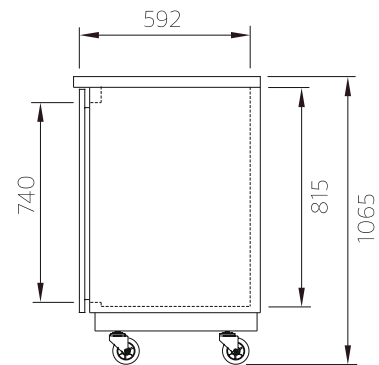
(unit : mm)



FRONT VIEW



TOP VIEW



SIDE VIEW

AUSTRALIA BRANCH

Turbo air

TURBO AIR PTY LTD
www.turboairinc.com.au
Ground floor, Building E
10 Highgate St, Auburn
NSW 2144 Australia
T. 02 9737 9881